

ZOOMLION

AERIAL WORK PLATFORMS



ZOOMLION

CE



ZOOMLION History	4
SCISSOR LIFTS	6
Electric scissor lifts	6
▪ Micro scissor lifts	6
▪ DC Series	6
▪ DC-Li Series	7
▪ Crawler scissor lifts	7
Diesel scissor lifts	8
▪ Rough terrain scissor lifts	8
ARTICULATED BOOM LIFTS	16
Electric articulated boom lifts	16
▪ ZA10RJE	16
▪ ZA14NJE / ZA14NJE-Li	16
▪ ZA16JERT / ZA16JERT-Li	17
▪ ZA20JE	17
▪ ZA20JERT / ZA20JERT-Li	18
Diesel articulated boom lifts	19
▪ ZA14J	19
▪ ZA20J	19
▪ ZA24J	20
▪ ZA32J	20
TELESCOPIC BOOM LIFTS	32
Electric telescopic boom lifts	32
▪ ZT22JE / ZT26JE	32
Diesel telescopic boom lifts	33
▪ ZT20J / ZT26J	33
▪ ZT30J	33
▪ ZT34J	34
▪ ZT38J	34
▪ ZT42J	35
▪ ZT58J	35
SPIDER BOOM LIFTS	44
Electric spider boom lifts	44
▪ ZX27AE	44

AERIAL WORK
PLATFORMS RANGE

SCISSOR LIFTS

	Electric models ⚡	Diesel models ⛽
Micro scissor lifts	ZS0407DC ZS0407DC-Li	-
DC Series scissor lifts	ZS0607DC ZS0808DC ZS0812DC ZS1012DC ZS1212DC ZS1414DC	-
DC-Li Series scissor lifts	ZS0607DC-Li ZS0808DC-Li ZS0812DC-Li ZS1012DC-Li ZS1212DC-Li ZS1414 DC-Li	-
Crawler scissor lifts	ZS0508C ZS0610C	-
Rough terrain scissor lifts	-	ZS1623RT



ARTICULATED BOOM LIFTS

	Electric models ⚡	Diesel models ⛽
Articulated boom lifts	ZA10RJE ZA14JE / ZA14JE-Li ZA14NJE / ZA14NJE-Li ZA16JERT / ZA16JERT-Li ZA20JE ZA20JERT / ZA20JERT-Li	ZA14J ZA20J ZA24J ZA32J



TELESCOPIC BOOM LIFTS

	Electric models ⚡	Diesel models ⛽
Telescopic boom lifts	ZT22JE ZT26JE	ZT20J ZT26J ZT30J ZT34J ZT38J ZT42J ZT58J



SPIDER BOOM LIFTS

	Electric models ⚡	Diesel models ⛽
Spider boom lifts	ZX27AE	-



AERIAL WORK PLATFORMS

ZOOMLION HISTORY

ZOOMLION Group based in Changsha China, has more than 50 years of history of innovation. One of the major milestone in the history of the Group is the foundation of the CICM, lately ZOOMLION, the **Changsha Institute of Construction Machinery**. The institute did concentrate all its activity in research and development of technologies applied to construction and in particular to concrete transportation, pumping, lifting machines and tower cranes. Today, ZOOMLION means great product portfolio, innovative solutions, best in class reliability and technology on top of an extended sales network and aftersales support.

9+

Countries R&D Center overseas Bases

10+

Countries Service platform

10+

Countries Subsidiaries

200+

Dealers



Construction Machinery



Agriculture Industry



Financial Service



ZValley

1956

Foundation of CICM in Beijing, China

1969

CICM in Changde, China

1978

CICM in Changsha, China

1992

Establishment of ZOOMLION in Changsha

1997

Establishment of ZOOMLION Lifting Machinery Co. Ltd. in China

2004

Started exploring the international market

2008

Acquisition of CIFA in Italy

2009

Changde factory put into production

2011

Purchase of the JOST Flat-top Technology in Germany

2013

Set up a joint-venture and started production in India

2014

Acquisition of RAXTAR in Netherland

2018

Establishment of Zoomlion CIFA Europe

2019

Changde Intelligent Factory Phase 1 put into operation

2020

Jiangyin factory started production

2021

Solferino (MN) plant inaugurated in Italy. Changde Intelligent Factory Phase 2 completed

Zoomlion Vision

To be a World-class Enterprise in Equipment Manufacturing

Scientific & Technological Industrialization

Development Globalization

Industry Technologization

PAG 5

SCISSOR LIFTS

Electric models

Micro Scissor lifts



» Highlights

- Industry-leading work height of 6.5m with high working efficiency
- 30% gradeability provides strong adaptability
- Full electric driving system features energy saving, environmental protection and no noise, suitable for indoor operation
- Light weight and compact dimension ideal for space restricted applications
- Knuckles lubrication-free and maintenance-free
- Drawer-type tray easy to service
- Battery Management System (BMS) + Machine control system provide dual protection

» Models

- ZS0407DC
- ZS0407DC-Li



DC Series



» Highlights

- High Performance
- The efficiency of direct electric-driven almost doubles hydraulic pump-driven
- Greater platform capacity with better performance on-the-job
- Front-wheel drive and brake offer mobility and versatility
- Easy Maintenance & Service
- Common components and modular design, easy to maintenance
- Bilateral swing-out trays (battery & hydraulic), simple to service
- Robust & build to last, reliable and safe

» Models

- | | |
|------------|------------|
| ▪ ZS0607DC | ▪ ZS1012DC |
| ▪ ZS0808DC | ▪ ZS1212DC |
| ▪ ZS0812DC | ▪ ZS1414DC |

Electric models

DC-Li Series



» Highlights

- 5-year warranty for Li-ion battery
- Maintenance-free and durable Li-ion battery with a triple longer lifetime than traditional
- Quick-charge technology save time
- Preheating function built-in for cold weather regions
- Smart Battery Management System (BMS) guarantees safety power

» Models

- | | |
|---------------|---------------|
| ▪ ZS0607DC-Li | ▪ ZS1012DC-Li |
| ▪ ZS0808DC-Li | ▪ ZS1212DC-Li |
| ▪ ZS0812DC-Li | ▪ ZS1414DC-Li |



Crawler Scissor lifts



» Highlights

- Rubber crawler provides small ground pressure and great obstacle crossing ability
- Pivot steering with good maneuverability
- Simple single handle control for steering and walking
- Work height of 8.8m with high working efficiency (ZS0610C only)
- Knuckles lubrication-free and maintenance-free
- AC motor full lifecycle maintenance-free

» Models

- ZS0508C
- ZS0610C



Diesel models

Rough terrain Scissor lifts

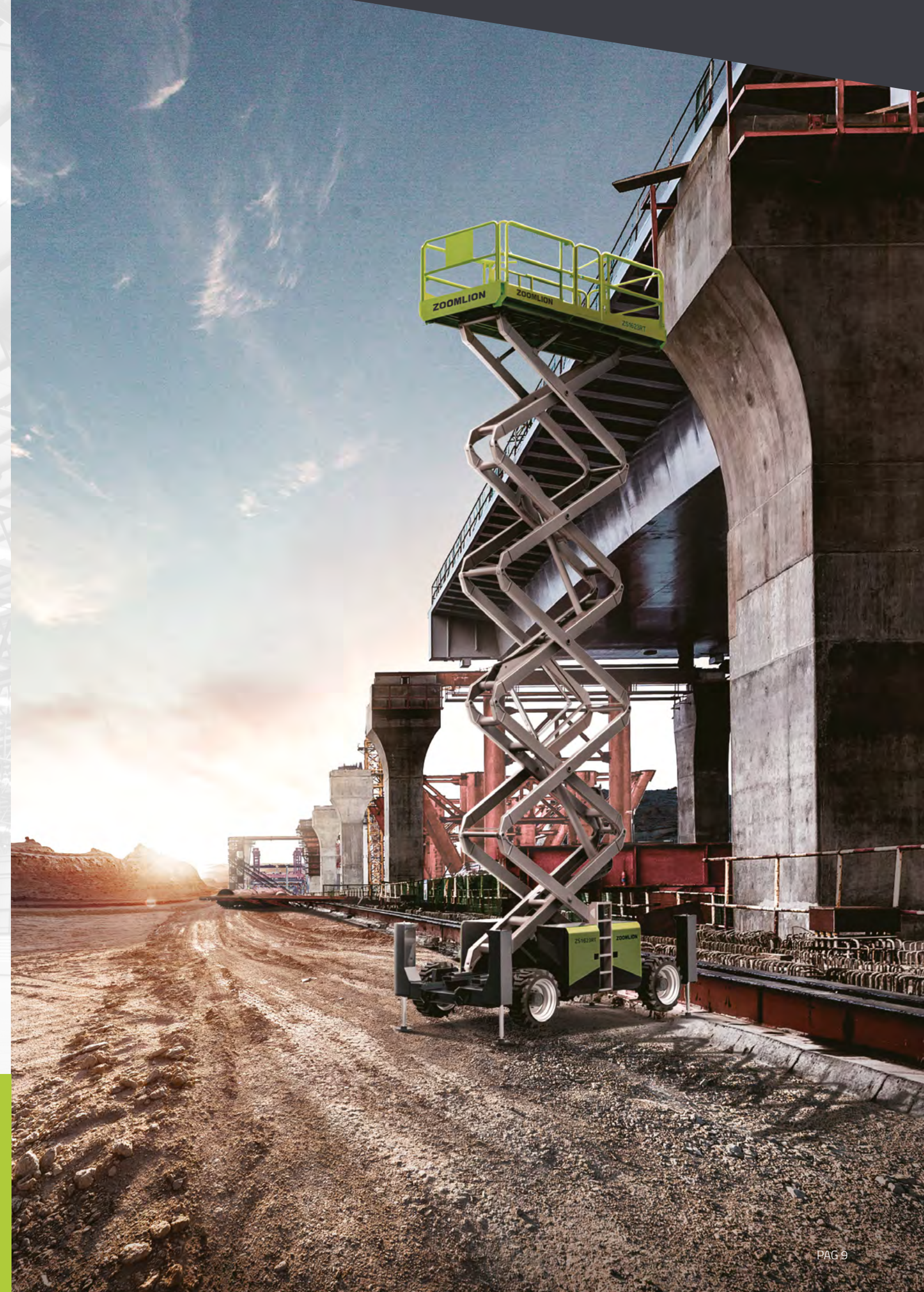


» Highlights

- Strong capacity of 680kg with high working efficiency
- 4WD and axle oscillation provide great off-road capability
- One-Click leveling function
- Bilateral power system effective to lower noise
- Knuckles lubrication-free and maintenance-free
- Swing-out tray easy to service

» Models

- ZS1623RT



SCISSOR LIFTS

Micro Scissor lifts

Comply with CE/ANSI/GB Standard



Model	ZS0407DC	ZS0407DC-Li
Size		
Work Height	6.5 m	6.5 m
Platform Height-Elevated	4.5 m	4.5 m
Platform Height-Stowed	0.95 m	0.95 m
Platform Length	1.29 m	1.29 m
Platform Width	0.7 m	0.7 m
Platform Extension	0.6 m	0.6 m
Overall Height (Rails up)	2.05 m	2.05 m
Overall Height (Rails down)	1.7 m	1.7 m
Overall Length	1.44 m	1.44 m
Overall Width	0.76 m	0.76 m
Wheelbase	1.05 m	1.05 m
Ground Clearance (Stowed)	0.06 m	0.06 m
Ground Clearance (Raised)	0.017 m	0.017 m
Performance		
Platform Capacity	240 kg	240 kg
Capacity on Deck Extension	100 kg	100 kg
Max. Number of Workers	2	2
Drive Speed (Stowed)	4 km/h	4 km/h
Drive Speed (Raised)	0.8 km/h	0.8 km/h
Turning Radius (Inside)	0.4 m	0.4 m
Turning Radius (Outside)	1.6 m	1.6 m
Lifting Motor	24V / 1.2kW	24V / 1.2kW
Drive Motor	24V / 2x0.45kW	24V / 2x0.45kW
Up/Down Time	23s / 25s	23s / 25s
Gradeability	30% (17°)	30% (17°)
Max. Working Slope (Lateral/Vertical)	1.5° / 3°	1.5° / 3°
Control	Proportional control	Proportional control
Drive	Rear wheels	Rear wheels
Brake	Rear wheels	Rear wheels
Tire	Ø230mm x 80mm	Ø230mm x 80mm
Power		
Battery	2x12V / 85Ah	80Ah Li-ion battery
Charger	24V / 15A	24V / 15A
Weight		
Gross	895 kg	895 kg

SCISSOR LIFTS

DC Series

Comply with CE/ANSI/GB Standard



Model	ZS0607DC	ZS0808DC	ZS0812DC	ZS1012DC	ZS1212DC	ZS1414DC
Size						
Work Height	7.8 m	10 m	10 m	11.8 m	13.8 m	15.7 m
Platform Height-Elevated	5.8 m	8 m	8 m	9.8 m	11.8 m	13.7 m
Platform Height-Stowed	1.05 m	1.26 m	1.26 m	1.39 m	1.52 m	1.54 m
Platform Length	1.65 m	2.3 m	2.3 m	2.3 m	2.3 m	2.67 m
Platform Width	0.74 m	0.81 m	1.12 m	1.12 m	1.12 m	1.12 m
Platform Extension	0.91 m	0.91 m	0.91 m	0.91 m	0.91 m	0.91 m
Overall Height (Rails up)	2.2 m	2.4 m	2.4 m	2.53 m	2.66 m	2.68 m
Overall Height (Rails down)	1.79 m	1.90 m	1.87 m	2 m	2.13 m	2.15 m
Overall Length	1.85 m	2.49 m	2.49 m	2.49 m	2.49 m	2.87 m
Overall Width	0.76 m	0.81 m	1.15 m	1.15 m	1.15 m	1.4 m
Wheelbase	1.37 m	1.85 m	1.85 m	1.85 m	1.85 m	2.22 m
Ground Clearance (Stowed)	0.06 m	0.11 m	0.11 m	0.11 m	0.11 m	0.11 m
Ground Clearance (Raised)	0.016 m	0.02 m	0.02 m	0.02 m	0.02 m	0.02 m
Performance						
Platform Capacity	230 kg	230 kg	450 kg	350 kg	350 kg	260 kg
Capacity on Deck Extension	113 kg	113 kg	113 kg	113 kg	113 kg	113 kg
Max. Number of Workers	2	2	Indoor: 2 Outdoor: 1	Indoor: 2 Outdoor: 1	3	2
Drive Speed (Stowed)	4 km/h	4 km/h	4 km/h	4 km/h	4 km/h	4 km/h
Drive Speed (Raised)	0.8 km/h	0.8 km/h	0.8 km/h	0.8 km/h	0.8 km/h	0.80 kkm/h
Turning Radius (Inside)	0.1 m	0.1 m	0.1 m	0.1 m	0.1 m	0.1 m
Turning Radius (Outside)	1.6 m	2.1 m	2.2 m	2.2 m	2.2 m	2.6 m
Lifting Motor	24V / 3.3kW	24V / 3.3kW	24V / 4.5kW	24V / 4.5kW	24V / 4.5kW	24V / 4.5kW
Drive Motor	24V / 2x0.65kW	24V / 2x0.75kW	24V / 0.75 kW	24V / 0.75 kW	24V / 0.75 kW	24V / 0.75 kW
Up/Down Time	20s / 24s	31s / 40s	31s / 40s	60s / 35s	62s / 42s	88s / 60 s
Gradeability	25% (14°)	25% (14°)	25% (14°)	25% (14°)	25% (14°)	25% (14°)
Max. Working Slope (Lateral/Vertical)	1.5° / 3°	1.5° / 3°	2° / 3°	1.5° / 3°	1.5° / 3°	1.5° / 3°
Control	Proportional control	Proportional control	Proportional control	Proportional control	Proportional control	Proportional control
Drive	Front wheels	Front wheels	Front wheels	Front wheels	Front wheels	Front wheels
Brake	Front wheels	Front wheels	Front wheels	Front wheels	Front wheels	Front wheels
Tire	Ø323mm x 100mm	Ø381mm x 127mm	Ø381mm x 127mm	Ø381mm x 127mm	Ø381mm x 127mm	Ø381mm x 127mm
Power						
Battery	4x6V / 210Ah(C20)	4x6V / 225Ah(C20)	4x6V / 240Ah(C20)	4x6V / 240Ah(C20)	4x12V / 300Ah(C20)	4x12V / 300Ah(C20)
Charger	24V / 30A	24V / 30A	24V / 30A	24V / 30A	24V / 30A	24V / 30A
Charger (Option)						
Weight	1455 kg	2090 kg	2550 kg	2930 kg	3000 kg	3310 kg
Gross	1455 kg	2090 kg	2550 kg	2930 kg	3000 kg	3310 kg

SCISSOR LIFTS

DC-Li Series

Comply with CE/ANSI/GB Standard



Model	ZS0607DC-Li	ZS0808DC-Li	ZS0812DC-Li	ZS1012DC-Li	ZS1212DC-Li	ZS1414DC-Li
Size						
Work Height	7.8 m	10 m	10 m	11.8 m	13.8 m	15.7 m
Platform Height-Elevated	5.8 m	8 m	8 m	9.8 m	11.8 m	13.7 m
Platform Height-Stowed	1.05 m	1.26 m	1.26 m	1.39 m	1.52 m	1.54 m
Platform Length	1.65 m	2.3 m	2.3 m	2.3 m	2.3 m	2.67 m
Platform Width	0.74 m	0.81 m	1.12 m	1.12 m	1.12 m	1.12 m
Platform Extension	0.91 m	0.91 m	0.91 m	0.91 m	0.91 m	0.91 m
Overall Height (Rails up)	2.2 m	2.4 m	2.4 m	2.53 m	2.66 m	2.68 m
Overall Height (Rails down)	1.79 m	1.9 m	1.87 m	2 m	2.13 m	2.15 m
Overall Length	1.85 m	2.49 m	2.49 m	2.49 m	2.49 m	2.87 m
Overall Width	0.76 m	0.81 m	1.15 m	1.15 m	1.15 m	1.4 m
Wheelbase	1.37 m	1.85 m	1.85 m	1.85 m	1.85 m	2.22 m
Ground Clearance (Stowed)	0.06 m	0.11 m	0.11 m	0.11 m	0.11 m	0.11 m
Ground Clearance (Raised)	0.016 m	0.02 m	0.02 m	0.02 m	0.02 m	0.02 m
Performance						
Platform Capacity	230 kg	230 kg	450 kg	350 kg	350 kg	260 kg
Capacity on Deck Extension	113 kg	113 kg	113 kg	113 kg	113 kg	113 kg
Max. Number of Workers	2	2	Indoor: 2 Outdoor: 1	Indoor: 2 Outdoor: 1	3	2
Drive Speed (Stowed)	4 km/h	4 km/h	4 km/h	4 km/h	4 km/h	4 km/h
Drive Speed (Raised)	0.8 km/h	0.8 km/h	0.8 km/h	0.8 km/h	0.8 km/h	0.8 kkm/h
Turning Radius (Inside)	0.1 m	0.1 m	0.1 m	0.1 m	0.1 m	0.1 m
Turning Radius (Outside)	1.6 m	2.1 m	2.2 m	2.2 m	2.2 m	2.6 m
Lifting Motor	24V / 3.3kW	24V / 3.3kW	24V / 4.5kW	24V / 4.5kW	24V / 4.5kW	24V / 4.5kW
Drive Motor	24V / 2x0.65kW	24V / 2x0.75kW	24V / 0.75 kW	24V / 0.75 kW	24V / 0.75 kW	24V / 0.75 kW
Up/Down Time	20s / 24s	31s / 40s	31s / 40s	60s / 35s	62s / 42s	88s / 60s
Gradeability	25% (14°)	25% (14°)	25% (14°)	25% (14°)	25% (14°)	25% (14°)
Max. Working Slope (Lateral/Vertical)	1.5° / 3°	1.5° / 3°	2° / 3°	1.5° / 3°	1.5° / 3°	1.5° / 3°
Control	Proportional control	Proportional control	Proportional control	Proportional control	Proportional control	Proportional control
Drive	Front wheels	Front wheels	Front wheels	Front wheels	Front wheels	Front wheels
Brake	Front wheels	Front wheels	Front wheels	Front wheels	Front wheels	Front wheels
Tire	Ø323mm x 100mm	Ø381mm x 127mm	Ø381mm x 127mm	Ø381mm x 127mm	Ø381mm x 127mm	Ø381mm x 127mm
Power						
Battery	160Ah Li-ion	160Ah Li-ion	230Ah Li-ion	230Ah Li-ion	230Ah Li-ion	230Ah Li-ion
Charger	24V / 30A	24V / 30A	24V / 30A	24V / 30A	24V / 30A	24V / 30A
Charger (Option)	N/A	24V / 60A	24V / 30A	24V / 30A	24V / 30A	24V / 30A
Weight						
Gross	1455 kg	2090 kg	2550 kg	2930 kg	3000 kg	3310 kg

SCISSOR LIFTS

Crawler

Comply with CE/ANSI/GB Standard



Model	ZS0508C	ZS0610C
Size		
Work Height	6.5 m	8.8 m
Platform Height-Elevated	4.5 m	6.8 m
Platform Height-Stowed	0.99 m	1.12 m
Platform Length	1.29 m	1.94 m
Platform Width	0.7 m	0.95 m
Platform Extension	0.6 m	0.91 m
Overall Height (Rails up)	2.1 m	2.26 m
Overall Height (Rails down)	1.74 m	1.77 m
Overall Length	1.46 m	2.1 m
Overall Width	0.81 m	1.05 m
Ground Clearance	0.07 m	0.127 m
Performance		
Platform Capacity	240 kg	250 kg
Capacity on Deck Extension	100 kg	113 kg
Max. Number of Workers	1	2
Drive Speed (Stowed)	2 km/h	2 km/h
Drive Speed (Raised)	0 km/h	0 km/h
Turning Radius	0 m	0 m
Drive Motor	24V / 2x0.77kW	24V / 2x1.8kW
Up/Down Time	23s / 25s	34s / 30s
Gradeability	25%(14°)	30%(17°)
Max. Working Slope (Lateral/Vertical)	1.7° / 1.7°	2° / 2°
Drive	Rear wheels	Rear wheels
Brake	Rear wheels	Rear wheels
Power		
Battery	2x12V91Ah (FULLRIVER) 2x12V/115Ah (QUIMO)	4x6V/220Ah (HOPPECKE) 4x12V/270Ah (QUIMO)
Charger	24V / 30A	24V / 30A
Weight		
Gross	895 kg	1700 kg

SCISSOR LIFTS

Rough terrain

Comply with CE/ANSI/GB Standard



Model	ZS1623RT
Size	
Work Height	18 m
Platform Height-Elevated	16 m
Platform Height-Stowed	2.03 m
Platform Length	3.98 m
Platform Width	1.83 m
Platform Extension	1.3 m
Overall Height (Rails up)	3.16 m
Overall Height (Rails down)	2.47m
Overall Length	4.88 m
Overall Width	2.3 m
Wheelbase	2.9 m
Ground Clearance	0.275 m
Performance	
Platform Capacity	680 kg
Capacity on Deck Extension	230 kg
Drive Height	9 m
Max. Number of Workers	4
Drive Speed (Stowed)	6.5 km/h
Drive Speed (Raised)	0.5 km/h
Turning Radius (Inside)	2.75 m
Turning Radius (Outside)	5.8 m
Up/Down Time	60s / 65s
Gradeability	40% (22°)
Max. Working Slope (Lateral/Vertical)	2° / 3°
Drive	4 WD
Tire	315 / 55 D20 Foam-filled tires 33x12-20 / 8 Solid Tires
Power	
Engine	Kubota V2403-M-DI 36kW/2600rpm Weichai WP3.2G50E317A 36.8kW/2500 rpm
Fuel Tank Capacity	105 l
Diesel Tank	100 l
Weight	
Gross	8650 kg



ARTICULATED BOOM LIFTS

Electric models

ZA10RJE



» Highlights

- Layout with central boom, balanced and sturdy design
- Efficient dual control system: valve and pump
- Powerful AC motor: precise control and reliable performance
- $\pm 90^\circ$ Jib rotation offers great up and over height
- Compact dimension of 1.2 m stowed width, ideal for working in narrow spaces
- Tubular batteries made for long working sessions, great lifespan and easy to maintain

ZA14NJE / ZA14NJE-Li



» Highlights

- Layout with central boom, balanced and sturdy design
- Efficient dual control system: valve and pump
- Powerful AC motor and drive system with on board control: precise, reliable and maintenance free
- Independent auxiliary power system for more secure application
- Maintenance free lithium battery up to 2500 cycles and 5-year warranty (ZA16JERT-Li only)
- IStandard fast charger for short charging time of 7 hours (ZA14NJE-Li Only)



Electric models

ZA16JERT / ZA16JERT-Li



» Highlights

- Layout with central boom, balanced and sturdy design
- Powerful AC motor and drive system: precise control, reliable and maintenance free
- First electrical off-road articulated boom lift reaches up to 16 m height suitable to all work conditions (ZA16JERT only)
- 4WD ideal for off-road applications (ZA16JERT-Li only)
- Efficient dual control system: valve and pump
- Maintenance free lithium battery up to 2500 cycles and 5-year warranty (ZA16JERT-Li only)



ZA20JE



» Highlights

- Powerful AC motor and drive system with on board control: precise, reliable and maintenance free
- Independent auxiliary power system for more secure application
- Best in class work height, 21.45 m, and lift capacity, up to 250 Kg



ARTICULATED BOOM LIFTS

Electric models

ZA20JERT / ZA20JERT-Li



» Highlights

- Great work height up to 21.8 m and outstanding lift capacity 250/360 Kg
- Fast lift function: boom can be lowered to ground level from the highest position without folding the boom sections
- Powerful AC motor and drive system: precise, reliable and maintenance free
- Independent auxiliary power system for more secure application
- Maintenance free lithium battery up to 2500 cycles and 5-year warranty (ZA16JERT-Li only)



Diesel models

ZA14J



» Highlights

- Outstanding platform capacity up to 300 Kg
- Built-in multiple pressure control leveling system to enhance stability
- Precise load sensing system to prevent overload operations
- Integrated rotary reducer for improved stability
- Dust protection kit for tough working environment
- Deadweight Lowering System for smooth operation



ZA20J



» Highlights

- Light weight design yet great platform capacity up to 250 Kg
- Built-in multiple pressure control leveling system to enhance stability
- Precise load sensing system to prevent overload operations
- Integrated rotary reducer for improved stability
- Dust protection kit for tough working environment
- Deadweight Lowering System for smooth operation
- Fast lifting function: boom lowering without boom folding operations



ARTICULATED BOOM LIFTS

Diesel models

ZA24J



» Highlights

- Platform capacity up to 250 Kg
- Built-in multiple pressure control leveling system to enhance stability
- Precise load sensing system to prevent overload operations
- Fast lifting function: boom lowering without boom folding operations
- Great negative reach up to 5.1 m
- Maximum working height up to 26.5 m

ZA32J



» Highlights

- Increased lift capacity up to 250 Kg, 28% improved efficiency
- Built-in multiple pressure control leveling system to enhance stability
- Precise load sensing system to prevent overload operations
- Deadweight Lowering System for smooth operation
- Great negative reach up to 5.7 m

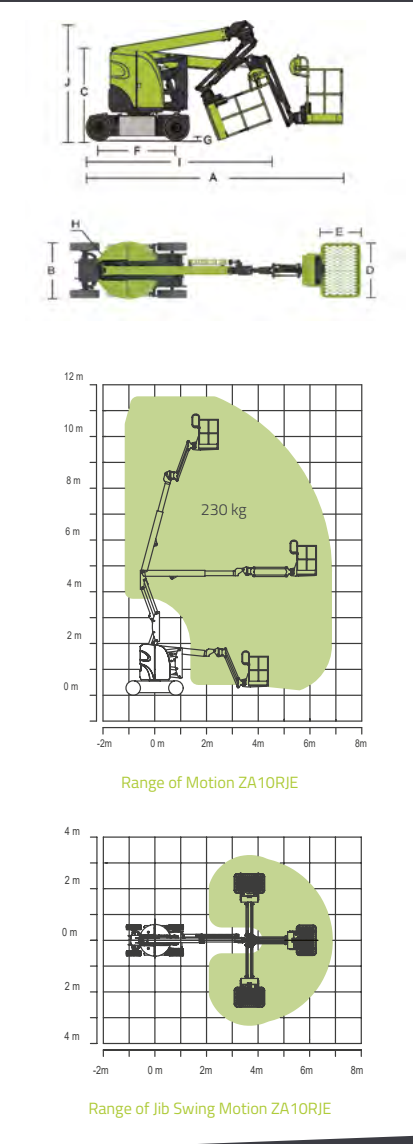




ARTICULATED
BOOM LIFTS
ZA10RJE

Comply with CE/ANSI/GB Standard

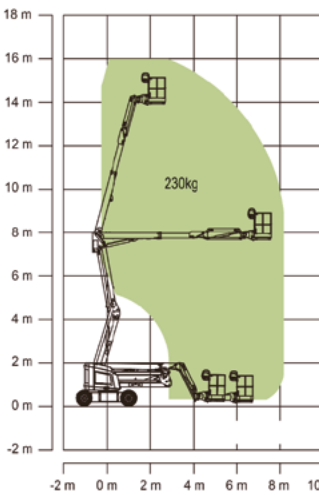
Model	ZA10RJE
Size	
Work Height	11.55 m
Platform Height	9.55 m
Horizontal Outreach	6.85 m
Up and Over Height	4.6 m
A - Stowed Length	5.5 m
B - Stowed Width	1.19 m
C - Stowed Height	1.98 m
D - Basket Length	1.17 m
D - Basket Length	0.76 m
Jib Height	1.24 m
F - Wheelbase	1.65 m
G - Ground Clearance	0.1 m
I - Transport Length (Jib tucked under)	3.95 m
J - Transport Height (Jib tucked under)	2.45 m
Performance	
Platform Capacity	230 kg
Drive Speed	5 km/h
Gradeability	35% (19°)
Turning Radius (Inside)	1.7 m
Turning Radius (Outside)	3.25 m
Turret Swing	355° non-continuous
Jib Swing	±90°
Platform Rotation	±90°
H - Tail Swing	0m
Max. Wind Speed	12.5 m/s
Power	
Battery	24x2V / 330Ah
Charger	48V / 35A
Drive Motor	AC 48V / 3.3 kW
Lift Motor	DC 48V / 4.5 kW
Auxiliary Power	Standard: Manual Option Option: Electric Pump
Hydraulic Tank Capacity	15 l
Tire	
Type	22x7x17.75 seamless tire
Weight	
Gross	6550 kg



ARTICULATED
BOOM LIFTS
ZA14NJE / ZA14NJE-Li

Comply with CE/ANSI/GB Standard

Model	ZA14NJE	ZA14NJE-Li
Size		
Work Height	16 m	16 m
Platform Height	14 m	14 m
Horizontal Outreach	8.14 m	8.14 m
Up and Over Height	7.74 m	7.74 m
A - Stowed Length	6.6 m	6.6 m
B - Stowed Width	1.75 m	1.75 m
C - Stowed Height	2 m	2 m
D - Basket Length	1.52 m	1.52 m
D - Basket Length	0.76 m	0.76 m
F - Wheelbase	2.05 m	2.05 m
G - Ground Clearance	0.20 m	0.20 m
Performance		
Platform Capacity	230 kg	230 kg
Drive Speed	6.1 km / h	5.4 km / h
Gradeability	30% (17°)	30% (17°)
Axles Oscillation	0.79 m	0.79 m
Turning Radius (Inside)	3.15 m	3.15 m
Turning Radius (Outside)	360° non-continuous	360° non-continuous
Swing	±90°	±90°
Platform Rotation	0.2 m	0.2 m
H - Tail Swing	3/4°	3/4°
Max. Wind Speed	12.5 m/s	12.5 m/s
Power		
Battery	2×24V/320Ah	48V/315Ah Li-ion battery
Charger	48V/35A	48V/60 A
Drive Motor	AC 32V / 3.3kw	AC 32V / 3.3 kW
Lift Motor	AC 32V / 7kw	AC 32V / 7 kW
Auxiliary Power	12V DC Electrical pump	12V DC Electrical pump
Hydraulic Tank Capacity	30 l	30 l
Tire		
Type	250-15 Solid tire 240/55D17.5 Foam-filled tire	250-15 Solid tire 240/55D17.5 Foam-filled tire
Weight		
Gross	6700 kg	6700 kg



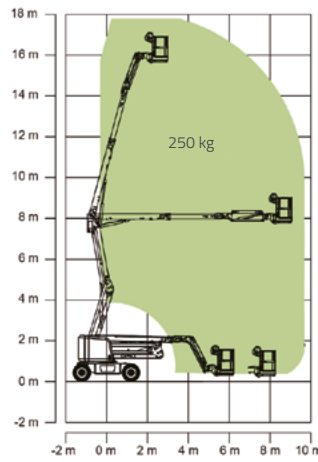
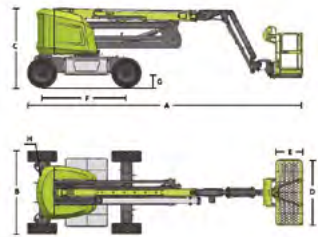
ARTICULATED BOOM LIFTS

ZA16JERT / ZA16JERT-Li

Comply with CE/ANSI/GB Standard



Model	ZA16JERT	ZA16JERT-Li
Size		
Work Height	17.8 m	17.8 m
Platform Height	15.8 m	15.8 m
Horizontal Outreach	9.72 m	9.72 m
Up and Over Height	8 m	8 m
A - Stowed Length	7.7 m	7.7 m
B - Stowed Width	2.3 m	2.3 m
C - Stowed Height	2.23 m	2.23 m
D - Basket Length	1.83 m	1.52 m
D - Basket Length	0.76 m	0.76 m
F - Wheelbase	2.36 m	2.36 m
G - Ground Clearance	0.36 m	0.36 m
Performance		
Platform Capacity	250 kg	250 kg
Drive Speed	6.1 km/h	5.4 km/h
Gradeability	45% (24°)	45% (24°)
Axles Oscillation	0.2 m	0.2 m
Turning Radius (Inside)	2.06 m	2.06 m
Turning Radius (Outside)	4.78 m	4.78 m
Turret Swing	360° non-continuous	360° non-continuous
Platform Rotation	±90°	±90°
H - Tail Swing	0.2 m	0.2 m
Max. Wind Speed	12.5 m/s	12.5 m/s
Power		
Battery	24x2V / 320Ah	48V / 315Ah Li-ion battery
Charger	48V / 35A	48V / 60A
Drive Motor	AC 32V	AC 32V
Lift Motor	AC 32V	AC 32V
Auxiliary Power	12 DC Electrical pump	12 DC Electrical pump
Hydraulic Tank Capacity	30 l	30 l
Tire		
Type	33x12 Foam-filled tires	33x12 Foam-filled tire
Weight		
Gross	7300 kg	7300 kg



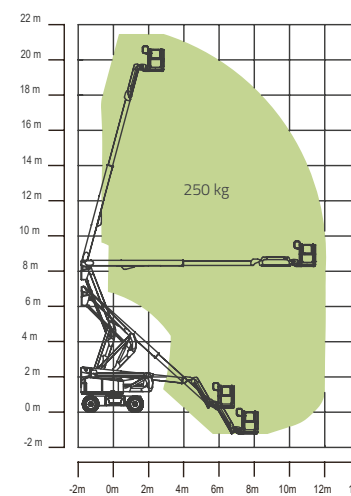
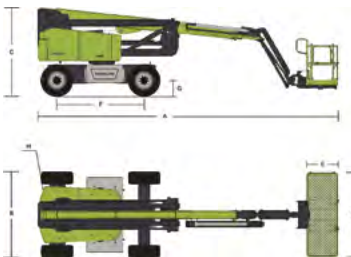
ARTICULATED BOOM LIFTS

ZA20JE

Comply with CE/ANSI/GB Standard



Model	ZA20JE
Size	
Work Height	21.45 m
Platform Height	19.45 m
Horizontal Outreach	12.05 m
Up and Over Height	8.25 m
A - Stowed Length	8.72 m
B - Stowed Width	2.46 m
C - Stowed Height	2.52 m
D - Basket Length	1.83 m (Standard) 2.44 m (Option)
D - Basket Length	0.76 m (Standard) 0.91 m (Option)
F - Wheelbase	2.52 m
G - Ground Clearance	0.33 m
Performance	
Platform Capacity	250 kg
Drive Speed	6.1 km/h
Gradeability	45% (24°)
Axles Oscillation	0.2 m
Turning Radius (Inside)	2.78 m
Turning Radius (Outside)	5.49 m
Swing	360° continuous 400° non-continuous
Platform Rotation	±90°
H - Tail Swing	0.6 m
Max. Wind Speed	12.5 m/s
Power	
Battery	24x2V / 440Ah
Charger	48V / 60A
Drive Motor	AC 32V / 3.3 kW
Lift Motor	AC 32V / 10 kW
Auxiliary Power	12V DC
Hydraulic Tank Capacity	75 l
Drive	4WD
Tire	
Type	33x12 D610 Foam-filled tires
Weight	
Gross	9200 kg



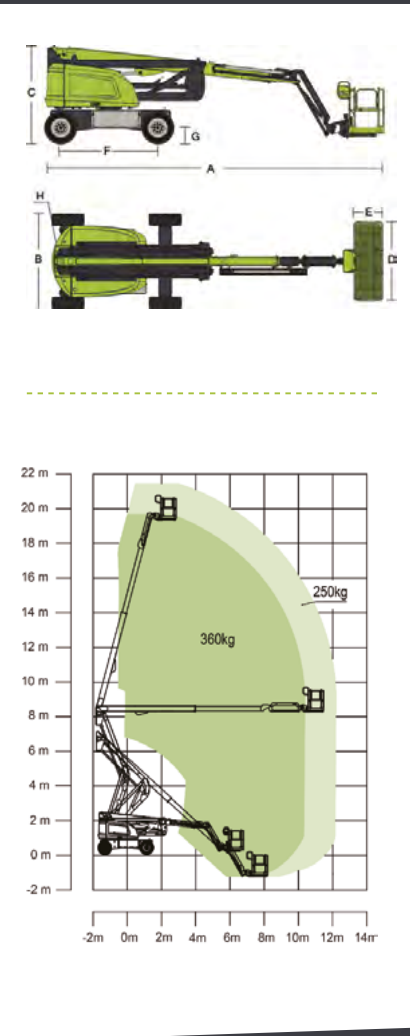
ARTICULATED
BOOM LIFTS

ZA20JERT / ZA20JERT-Li

Comply with CE/ANSI/GB Standard



Model	ZA20JERT	ZA20JERT-Li
Size		
Work Height	21.38 m	21.38 m
Platform Height	19.38 m	19.38 m
Horizontal Outreach	12.1 m	12.1 m
Up and Over Height	8.25 m	8.25 m
A - Stowed Length	8.8 m	8.8 m
B - Stowed Width	2.46 m	2.46 m
C - Stowed Height	2.52 m	2.52 m
D - Basket Length	Standard: 2.44 m Option: 1.83 m	1.83 m (Standard) 2.44 m (Option)
D - Basket Length	Standard: 0.76 m Option: 0.91 m	0.76 m (Standard) 0.91 m (Option)
F - Wheelbase	2.52 m	2.52 m
G - Ground Clearance	0.4 m	0.4 m
Performance		
Platform Capacity	250 kg / 360 kg	250 / 360 kg
Drive Speed	6.1 km/h	5.2 km/h
Gradeability	45%	45%
Axles Oscillation	0.2 m	0.2 m
Turning Radius (Inside)	2.78 m	2.78 m
Turning Radius (Outside)	5.49 m	5.49 m
Swing	360° continuous	360° continuous
Platform Rotation	±90°	±90°
H - Tail Swing	0.64 m	0.64 m
Max. Working Slope	3° / 5°	3° / 5°
Max. Wind Speed	12.5 m/s	12.5 m/s
Power		
Battery	24x2V / 440 Ah	48V / 315Ah Li-ion battery
Charger	48V / 60 A	48V / 60 A
Drive Motor	AC 32 V	AC 32 V
Lift Motor	AC 32 V	AC 32 V
Auxiliary Power	12 V DC Electrical pump	12 V DC Electrical pump
Hydraulic Tank Capacity	75 l	75 l
Tire		
Type	33x12 D610 Foam-filled tire	33x12 D610 Foam-filled tires
Weight		
Gross	9250 kg	9250 kg



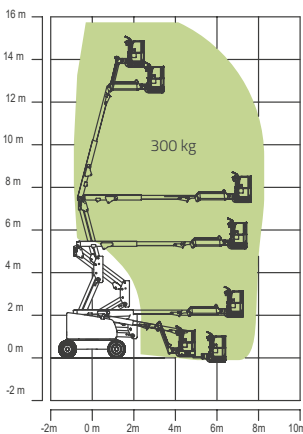
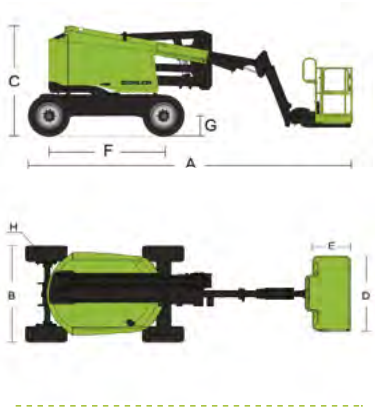
ARTICULATED
BOOM LIFTS

ZA14J

Comply with CE/ANSI/GB Standard



Model	ZA14J
Size	
Work Height	15.8 m
Platform Height	13.8 m
Horizontal Outreach	8.3 m
Up and Over Height	7.55 m
A - Stowed Length	6.57 m
B - Stowed Width	2.3 m
C - Stowed Height	2.27 m
D - Basket Length	1.83 m
D - Basket Length	0.76 m
Jib Length	1.24 m
F - Wheelbase	2.36 m
G - Ground Clearance	0.42 m
Performance	
Platform Capacity	300 kg
Drive Speed	6.8 km/h
Gradeability	45% (24°)
Axles Oscillation	0.1 m
Turning Radius (Inside)	2.06 m
Turning Radius (Outside)	4.78 m
Swing	355° non-continuous
Platform Rotation	±90°
H - Tail Swing	0
Max. Wind Speed	12.5 m/s
Power	
Diesel Engine	Kubota V2403 36kW / 2600rpm Weichai WP3.2G50E317A 36.8kW / 2500rpm Deutz D2.9 L4 36.4kW / 2600rpm
Fuel Tank Capacity	65 l
Auxiliary Power	12 V
Control Voltage	12 V
Hydraulic System Capacity	150 l
Hydraulic Tank Capacity	76 l
Drive	4WD
Tire	
Type	315/55 D20 Foam-filled tires 33x12-20 Solid Tires
Weight	
Gross	7100 kg



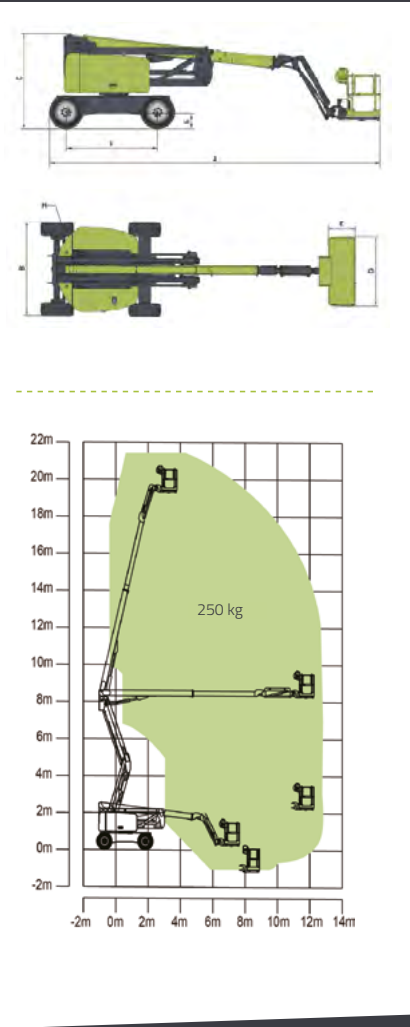
ARTICULATED BOOM LIFTS

ZA20J

Comply with CE/ANSI/GB Standard



Model	ZA20J
Size	
Work Height	21.38 m
Platform Height	19.38 m
Horizontal Outreach	12.3 m
Up and Over Height	8.25 m
A - Stowed Length	8.82 m
B - Stowed Width	2.46 m
C - Stowed Height	2.52 m
D - Basket Length	2.44 / 1.83 m
D - Basket Length	0.91 / 0.76 m
Jib Length	1.53 m
F - Wheelbase	2.52 m
G - Ground Clearance	0.42 m
Performance	
Platform Capacity	250 kg
Drive Speed	6.1 km/h
Gradeability	45% (24°)
Axles Oscillation	0.2 m
Turning Radius (Inside)	2.51 m
Turning Radius (Outside)	5.47 m
Turret Swing	360° continuous
Platform Rotation	±90°
H - Tail Swing	0.4 m
Max. Wind Speed	12.5 m/s
Power	
Diesel Engine	Kubota V2403 36kW/2600rpm Weichai WP3.2G50E3 17A 36.8kW/2500rpm
Fuel Tank Capacity	150 l
Auxiliary Power	12 V
Control Voltage	12 V
Hydraulic System Capacity	160 l
Hydraulic Tank Capacity	75 l
Tire	
Type	33×12/D610 Foam-filled tires
Weight	
Gross	10000 kg



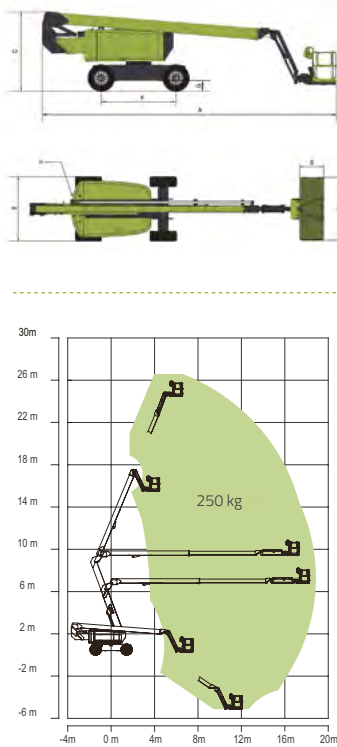
ARTICULATED BOOM LIFTS

ZA24J

Comply with CE/ANSI/GB Standard



Model	ZA24J
Size	
Work Height	26.5 m
Platform Height	24.5 m
Horizontal Outreach	18.9 m
Up and Over Height	9.42 m
A - Stowed Length	11.25 m
B - Stowed Width	2.49 m
C - Stowed Height	3 m
D - Basket Length	2.44 m
D - Basket Length	0.91 m
Jib Length	1.83 m
F - Wheelbase	3.05 m
G - Ground Clearance	0.4 m
Performance	
Platform Capacity	250 kg
Drive Speed	5 km/h
Gradeability	45% (24°)
Axles Oscillation	0.2 m
Turning Radius (Inside)	3.35 m
Turning Radius (Outside)	6.48 m
Swing	360° continuous
Platform Rotation	±90°
H - Tail Swing	0.94 m
Max. Wind Speed	12.5 m/s
Power	
Diesel Engine	Cummins QSF2.8 54kW/2400rpm
Fuel Tank Capacity	150 l
Auxiliary Power	12 V
Control Voltage	12 V
Hydraulic System Capacity	240 l
Hydraulic Tank Capacity	180 l
Drive	4WD
Tire	
Type	15-625 Foam-filled tires
Weight	
Gross	18300 kg



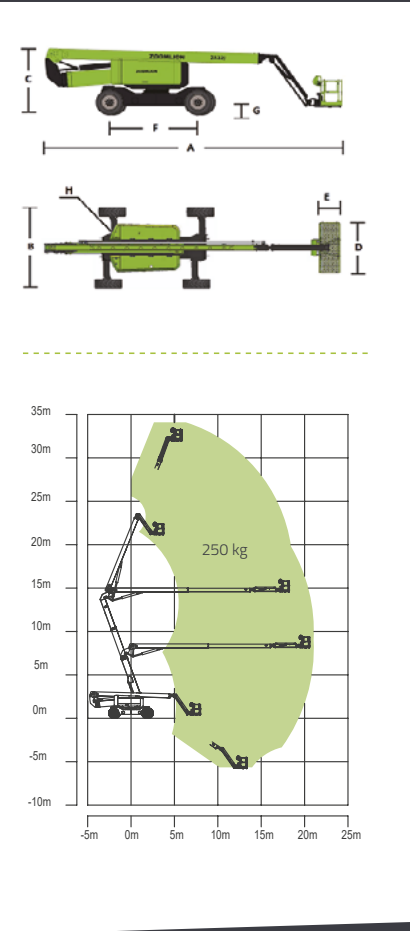
ARTICULATED BOOM LIFTS

ZA32J

Comply with CE/ANSI/GB Standard



Model	ZA32J
Size	
Work Height	33.85 m
Platform Height	31.85 m
Horizontal Outreach	21.17 m
Up and Over Height	14.52 m
A - Stowed Length	12.6 m
B - Stowed Width	2.49 m
C - Stowed Height	3.1 m
D - Basket Length	2.44 m
D - Basket Length	0.91 m
Jib Length	2.44 m
F - Wheelbase	3.81 m
G - Ground Clearance	0.42 m
Performance	
Platform Capacity	250 kg
Drive Speed	5.2 km/h
Gradeability	45% (24°)
Axles Oscillation	0.2 m
Turning Radius (Inside)	7.7m / 3.3m
Turning Radius (Outside)	10.8m / 8.2m
Swing	360° continuous
Platform Rotation	±90°
H - Tail Swing	0
Max. Wind Speed	12.5 m/s
Power	
Diesel Engine	Cummins QSF2.8 54kW/2400rpm
Fuel Tank Capacity	200 l
Auxiliary Power	12 V
Control Voltage	12 V
Hydraulic System Capacity	300 l
Hydraulic Tank Capacity	200 l
Tire	
Type	445/50D710 Foam-filled tires
Weight	
Gross	19200 kg



TELESCOPIC BOOM LIFTS

Electric models

ZT22JE / ZT26JE



» Highlights

- Maintenance free lithium-ion, no noise and environmental friendly and long working shifts
- Powerful AC motor and drive system: precise, reliable and maintenance free. Works on gradeability up to 45%
- Low-temperature regenerative current control and power self-adaptive control to extend charge performance
- Multi.power charging system compatible with 10A / 16A / 32A
- New design with hood in composite material for better heat preservation, aging and corrosion resistance
- Great uder-hood accessibility and large storage boxes

Diesel models

ZT20J / ZT26J



» Highlights

- Premium work performance
- Zoomlion AWM Remote Monitoring and Rental Management System
- Smart telematic control interface with self-diagnostic capability

ZT30J



» Highlights

- Rough terrain chassis features swing axle function, easy to achieve 45% gradeability
- Industry's first 30-meter class lifter without bridge extending
- Smooth boom extension 30% more efficient compared to double-cylinder system
- Minimum boom extension speed 0.015 m/s



TELESCOPIC BOOM LIFTS

Diesel models

ZT34J



» Highlights

- Perform dual capacity design, up to 300/454kg
- Rough terrain chassis features swing axle function, easy to achieve 45% gradeability
- Innovative outrigger design; great reliability, smooth telescopic system and tire wear prevention (option)
- Smooth boom extension 30% more efficient compared to double-cylinder system
- Best in class work platform, 10 % larger than similar models

ZT38J



» Highlights

- Dual capacity: up to 300 or 454 Kg
- Rough terrain chassis features swing axle function, easy to achieve 45% gradeability
- Innovative outrigger design; working in tough conditions, reliable telescopic system, tire wear prevention (option)
- Smooth boom extension 30% more efficient compared to double-cylinder system
- Best in class work platform, 10 % larger than similar models

Diesel models

ZT42J



» Highlights

- Dual capacity: 300 / 454 Kg;
Rough terrain chassis up to 45% gradeability;
Innovative outrigger design;
Smooth boom extension;
Large work platform
- R-shaped slider and U-shaped channel steel design at the bottom of the boom, improved boom stiffness and balance
- Boom with U-shaped design to reduce weight and optimize stability
- Jib rotary function widen range of applications
- Swing out engine tray

ZT58J



» Highlights

- Work height up to 58.8m and horizontal outreach up to 25.5m
- First polygonal boom on the market, 10% lighter than conventional design
- New improved version with vertical stiffness increased by 25% and torsion resistance augmented by 20%

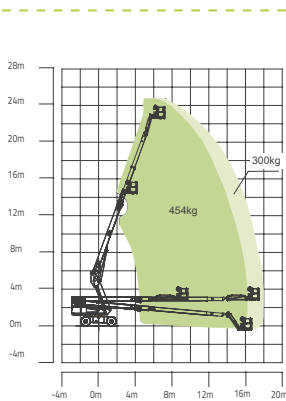
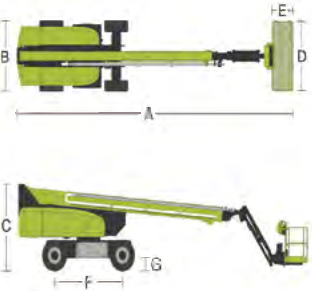


TELESCOPIC BOOM LIFTS
ZT22JE / ZT26JE

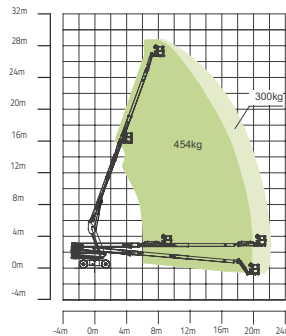
Comply with CE/ANSI/GB Standard



Model	ZT22JE	ZT26JE
Size		
Work Height	24.4 m	28.7 m
Platform Height	22.4 m	26.7 m
Horizontal Outreach	17.9 m	22.1 m
A - Stowed Length	10.3 m	11.91 m
B - Stowed Width	2.49 m	2.49 m
C - Stowed Height	2.76 m	2.82 m
D - Basket Length	2.44 m	2.44 m
D - Basket Length	0.91 m	0.91 m
Jib Length	1.83 m	1.83 m
F - Wheelbase	2.52 m	2.80 m
Tread	2.49 m	2.49 m
G - Ground Clearance	0.41 m	0.41 m
Performance		
Platform capacity (Unrestricted / Restricted)	300kg / 454kg	300kg / 454kg
Drive Speed (Stowed)	5.5 km/h	5.5 km/h
Gradeability	45% (24°)	45% (24°)
Turning Radius (Inside)	2.72 m	3.11 m
Turning Radius (Outside)	5.58 m	6.16 m
Turret Swing	360° continuous	360° continuous
Platform Rotation	±90°	±90°
Tail Swing	1.61 m	1.61 m
Jib Rotation	130° (-55° ~ 75°)	130° (-55° ~ 75°)
Max. Wind Speed	12.5 m/s	12.5 m/s
Power		
Battery	80 V	80 V
Charger	5kW / 80V	5kW / 80V
Drive Motor	4.2 kW	5.2 kW
Lifting Motor	21 kW	30 kW
Auxiliary Power	12V DC	12V DC
Hydraulic Tank Capacity	120 l	120 l
Tire		
Type	355/55-24.5 Foam-filled tires 355/55 D625 Solid Tires	15-625 Foam-filled tires 385/65-24 Solid Tires
Weight		
Gross	13200 kg	17600 kg



Range of Motion ZT22JE



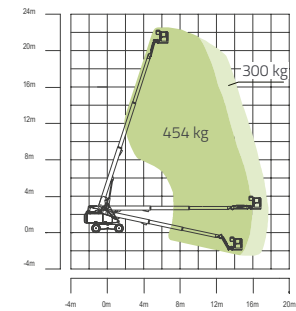
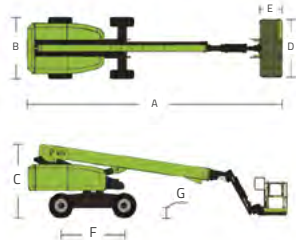
Range of Motion ZT26JE

TELESCOPIC BOOM LIFTS
ZT20J / ZT26J

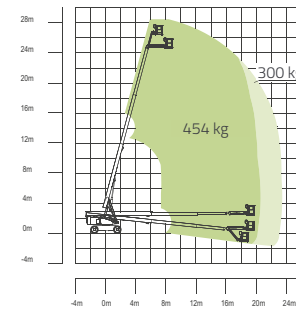
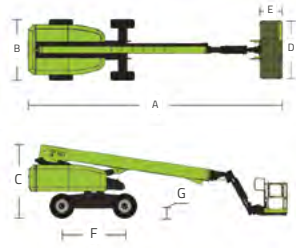
Comply with CE/ANSI/GB Standard



Model	ZT20J	ZT26J
Size		
Work Height	22.75 m	28.2 m
Platform Height	20.75 m	26.2 m
Horizontal Outreach	16.8 m	22.71 m
Stowed Length	10.36 m	12.5 m
Stowed Width	2.49 m	2.49 m
Stowed Height	2.78 m	2.8 m
Platform Length	2.44 m	2.44 m
Platform Width	0.91 m	0.91 m
Wheelbase	2.52 m	3.05 m
Tread	2.13 m	2.11 m
Ground Clearance	0.42 m	0.4 m
Performance		
Platform capacity (Unrestricted / Restricted)	300kg / 454kg	300kg / 454kg
Drive Speed (Working)	6 km/h	5.5 km/h
Gradeability	45% (24°)	45% (24°)
Turning Radius (Inside)	2.4 m	3.66 m
Turning Radius (Outside)	5.4 m	6.86 m
Turret Swing	360° continuous	360° continuous
Platform Rotation	±90°	±90°
Tail Swing	1.45 m	1.6 m
Jib (Range of Articulation)	135° (-65° ~ 75°)	135° (-65° ~ 75°)
Max. Working Slope	3°	3°
Max. Wind Speed	12.5 m/s	12 m/s
Power		
Engine	Deutz D447 L4 / Perkins 404D-22T	Deutz TD2.9 L4 / Cummins QSF2.8
Fuel Tank Capacity	130 l	150 l
Control Voltage	12V DC	12V DC
Hydraulic System Capacity	150 l	150 l
Drive Mode	4WD	4WD
Steering Mode	Front-wheel	Front-wheel
Tire		
Type	355/55D-625 Foam-filled tires	15-625 Foam Filled Tires
Weight		
Gross	12200 kg	18900 kg



Range of Motion ZT20J

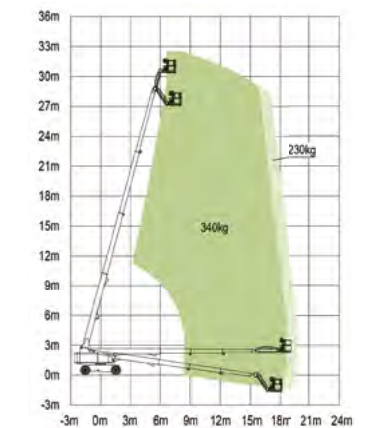
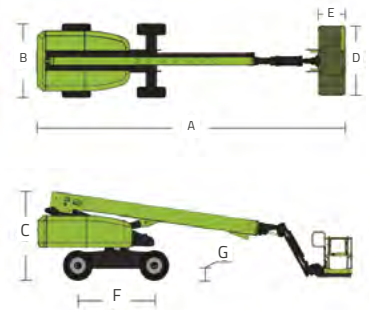


Range of Motion ZT26J

TELESCOPIC BOOM LIFTS

ZT30J

Comply with CE/ANSI/GB Standard



Model	ZT30J
Size	
Work Height	32.48 m
Platform Height	30.48 m
Horizontal Outreach	19.78 m
Stowed Length	12.43 m
Stowed Width	2.49 m
Stowed Height	2.8 m
Platform Length	2.44 m
Platform Width	0.91 m
Jib Length	1.83 m
Wheelbase	3.05 m
Tread	2.49 m
Ground Clearance	0.4 m
Performance	
Platform capacity (Unrestricted / Restricted)	230 / 340 kg
Drive Speed (Stowed)	5.50 km/h
Gradeability	45% (24°)
Turning Radius (Inside)	3.66 m
Turning Radius (Outside)	6.86 m
Turret Swing	360° continuous
Platform Rotation	±90°
Tail Swing	1.47 m
Jib (Range of Articulation)	130° (-55° ~ 75°)
Max. Wind Speed	12.5 m/s
Power	
Engine	Cummins QSF2.8 54kW/2400rpm Weichai DHN2.3G0020 55.4kW/2600rpm
Fuel Tank Capacity	150 l
Control Voltage	12V DC
Hydraulic System Capacity	150 l
Drive Mode	4 WD
Steering Mode	Front-wheel
Tire	
Type	15-625 Foam-filled tires 385/65-24 Solid Tires
Weight	
Gross	19100 kg

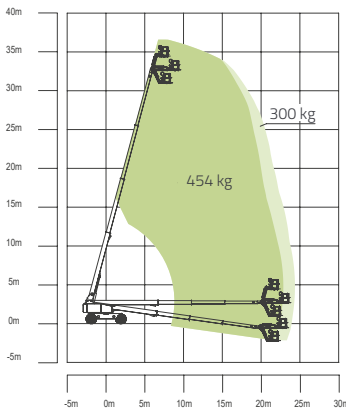
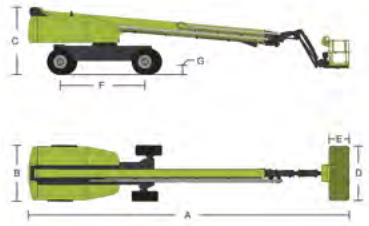
TELESCOPIC BOOM LIFTS

ZT34J

Comply with CE/ANSI/GB Standard



Model	ZT34J
Size	
Work Height	36 m
Platform Height	34 m
Horizontal Outreach	24.2 m
Stowed Length	13.5 m
Stowed Width	2.49 m
Stowed Height	3 m
Platform Length	2.44 m
Platform Width	0.91 m
Jib Length	1.83 m
Wheelbase	3.81 m
Tread	2.49m / 3.87m
Ground Clearance	0.41 m
Performance	
Platform capacity (Unrestricted / Restricted)	300kg / 454kg
Drive Speed (Stowed)	5 km/h
Gradeability	45% (24°)
Turning Radius (Inside)	7.7m / 3.3 m
Turning Radius (Outside)	10.8m / 8.2m
Turret Swing	360° continuous
Platform Rotation	±90°
Tail Swing	1.2 m
Jib (Range of Articulation)	130° (-55° ~ 75°)
Max. Wind Speed	12.5 m/s
Power	
Engine	Cummins QSF2.8 54kW/2400rpm
Fuel Tank Capacity	200 l
Control Voltage	12V DC
Hydraulic Tank Capacity	250 l
Drive Mode	4WD
Steering Mode	Four wheels / Front wheel / Crab
Tire	
Type	IN445/50D710 Foam-filled tires
Weight	
Gross	19000 kg



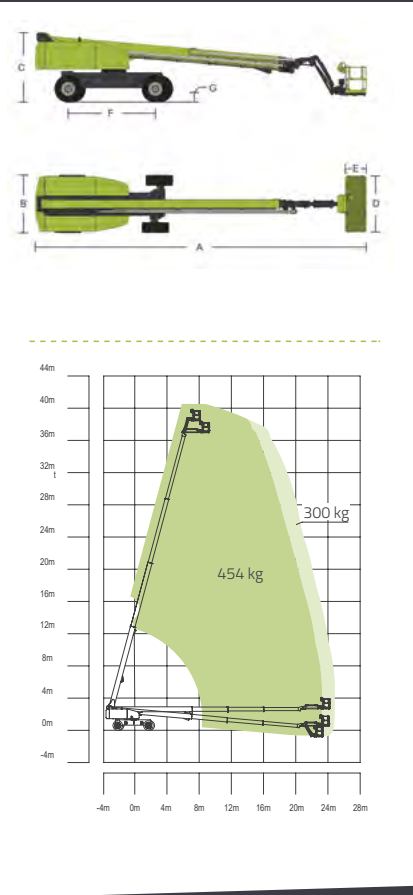
TELESCOPIC BOOM LIFTS

ZT38J

Comply with CE/ANSI/GB Standard



Model	ZT38J
Size	
Work Height	40.2 m
Platform Height	38.2 m
Horizontal Outreach	25 m
Stowed Length	12.3 m
Stowed Width	2.49 m
Stowed Height	3 m
Platform Length	2.44 m
Platform Width	0.91 m
Jib Length	1.53 m
Wheelbase	3.81 m
Tread	2.49 / 3.87 m
Ground Clearance	0.41 m
Performance	
Platform capacity (Unrestricted / Restricted)	300kg / 454kg
Drive Speed (Stowed)	5 km/h
Gradeability	45% (24°)
Turning Radius (Inside)	7.7m / 3.3m
Turning Radius (Outside)	10.8m / 8.2m
Turret Swing	360° continuous
Platform Rotation	±90°
Tail Swing	1.48 m
Jib (Range of Articulation)	135° (-60° ~75°)
Max. Wind Speed	12.5 m/s
Power	
Engine	Cummins QSF2.8 54kW/2400rpm
Fuel Tank Capacity	200 l
Control Voltage	12V DC
Hydraulic System Capacity	250 l
Drive Mode	4WD
Steering Mode	Four wheels / Front wheel / Crab
Tire	
Type	IN445/50D710 Foam-filled tires
Weight	
Gross	20700 kg



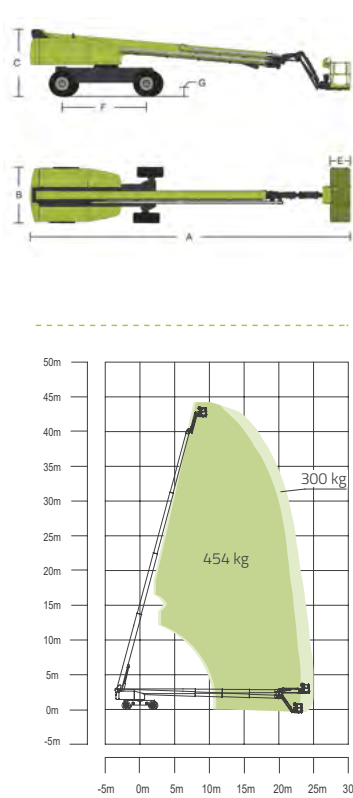
TELESCOPIC BOOM LIFTS

ZT42J

Comply with CE/ANSI/GB Standard



Model	ZT42J
Size	
Work Height	44.08 m
Platform Height	42.08 m
Horizontal Outreach	25 m
Stowed Length	13 m
Stowed Width	2.49 m
Stowed Height	3 m
Platform Length	2.44 m
Platform Width	0.91 m
Jib Length	2.44 m
Wheelbase	3.81 m
Tread	2.49m / 3.87m
Ground Clearance	0.41 m
Performance	
Platform capacity (Unrestricted / Restricted)	300kg / 454kg
Drive Speed (Stowed)	5 km/h
Gradeability	45% (24°)
Turning Radius (Inside)	7.7m / 3.3m
Turning Radius (Outside)	10.8m / 8.2m
Turret Swing	360° continuous
Platform Rotation	±90°
Tail Swing	1.68 m
Jib (Range of Articulation)	130° (-55° ~ 75°)
Max. Wind Speed	12.5 m/s
Power	
Engine	Cummins QSF2.8 54kW/2400rpm
Fuel Tank Capacity	200 l
Control Voltage	12V DC
Hydraulic Tank Capacity	250 l
Drive Mode	4WD
Steering Mode	Four wheels / Front wheel / Crab
Tire	
Type	IN445/50 D710 Foam-filled tires
Weight	
Gross	21900 kg



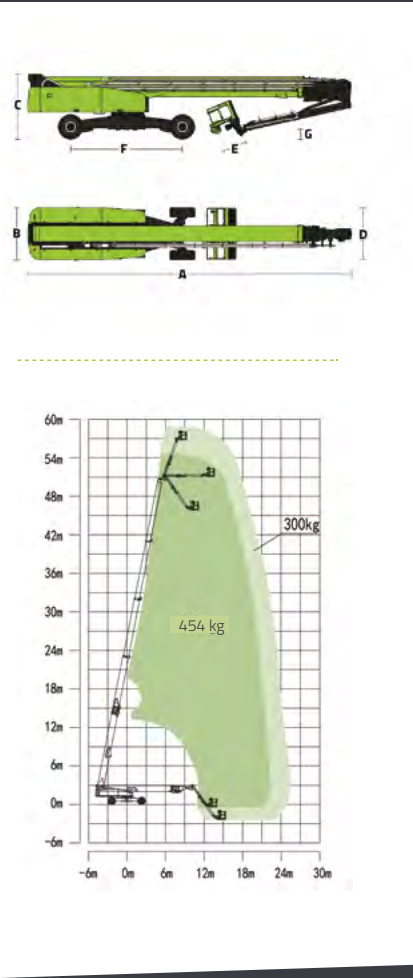
TELESCOPIC BOOM LIFTS

ZT58J

Comply with CE/ANSI/GB Standard



Model	ZT58J
Size	
Work Height	58.8 m
Platform Height	56.8 m
Horizontal Outreach	25.5 m
Stowed Length	14.4 m
Stowed Width	2.5 m
Stowed Height	3.06 m
Platform Length	2.44 m
Platform Width	0.91 m
Wheelbase	5.357m / 4.69m
Tread	2.50m / 5.15m
Ground Clearance	0.4 m
Performance	
Platform capacity (Unrestricted / Restricted)	300kg /454kg
Drive Speed (Stowed)	4.5 km/ h
Gradeability	45% (24°)
Turning Radius (Inside)	6.79m / 2.57m
Turning Radius (Outside)	8.43m / 6.39m
Turret Swing	360° non-continuous
Platform Rotation	±90°
Tail Swing	2.25 m
Jib (Range of Articulation)	125° (-55° ~70°)
Max. Wind Speed	12.5 m/s
Power	
Engine	Cummins QSF3.8
Fuel Tank Capacity	200 l
Control Voltage	12V DC
Hydraulic System Capacity	400 l
Drive Mode	4WD
Steering Mode	Four wheels / Front wheel / Crab
Tire	
Type	445/50 D710 Foam-filled tires
Weight	
Gross	29600 kg



SPIDER BOOM LIFTS

Electric models

ZX27AE



» Highlights

- 0.89m ultra -narrow width, quick-change work platform, easy access to compact spaces
- Pure lithium-ion battery power features environmental protection and quiet operation
- Accuate and efficient permanent magnet synchronous motor provides strong power and stable control
- Non-marking rubber track suitable for all terrains
- Central layout, great structural rigidity, and small boom deflection
- Bus hydraulic valve control system offers stable and reliable movement
- Advanced energy management system supports synchronous power supply from external power supply, providing long-lasting battery life

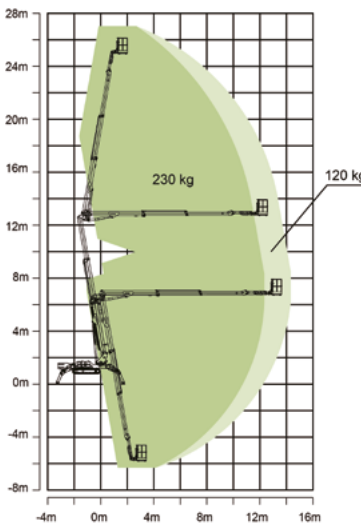
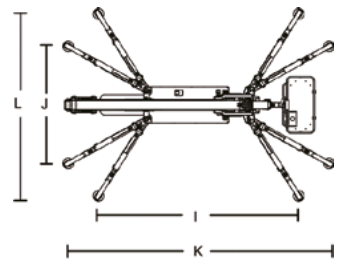


SPIDER BOOM LIFTS ZX27AE

Comply with CE/ANSI/GB Standard



Model	ZX27AE
Size	
Work Height	27 m
Platform Height	25 m
Horizontal Outreach	14.2 m
Up and Over Height	12.7 m
Below Ground Reach	5.8 m
Stowed Length (w/ platform)	6.15 m
Stowed Length (w/o platform)	5.7 m
Stowed Width	0.89 m
Stowed Height	2.05 m
Platform Length	1.4 m
Platform Width	0.7 m
Platform Height	1.25 m
Crawler Size (Length x Width)	1.52 x 0.25 m
Max Length w/ Outrigger Extending (Standard)	4.95 m
Max Width w/ Outrigger Extending (Standard)	4.48 m
Max Length w/ Outrigger Extending (Narrow)	6.45 m
Max Width w/ Outrigger Extending (Narrow)	2.88 m
Outrigger Pad Size (Diameter)	0.26 m
Approach Angle	15°
Departure Angle	24°
Performance	
Platform Capacity	230 kg (Restricted) / 120 kg (Unrestricted)
Drive Speed	2 km/h
Gradeability	16.7°/30%
Allowable Tilting Angle When Driving	10°/17°
Turret Swing	400° non-continuous
Platform Rotation	±90°
Tail Swing	0 m
Max Leveling Angle	16°
Max Wind Speed	12.5 m/s
Power	
Battery	315Ah 48V
Charger	48V / 60A
Drive Motor	Permanent magnet synchronous motor 48V
Lift Motor	Permanent magnet synchronous motor 48V
Auxiliary Power	Electric pump
Hydraulic Tank Capacity	50 l
Tire	
Crawler Type	K250×47×88 non-marking rubber crawler belt
Weight	
Gross Weight	4650 kg
Ground Pressure When Driving	33.68 kN/m²
Ground Pressure When Working (Standard)	2.05 kN/m²
Ground Pressure When Working (Narrow)	2.45 kN/m²
Pressure on Single Outrigger When Working	31.89 kN





VISION CREATES FUTURE

ZOOMLION

Zoomlion CIFA Europe S.r.l.

ZOOMLION CIFA Europe S.r.l. Official Distributor for Europe
Via Stati Uniti d'America, 26 - 20030 Senago (MI) - Italy
Phone +39-02-990131 - info@zoomlion-europe.com - www.zoomlion-europe.com